

TRILOGY

907

PHONO STAGE FROM TRILOGY



2

INTRODUCTION TO TRILOGY

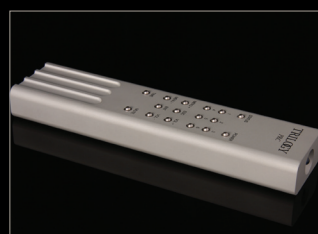
Several years in the making, this latest generation of Trilogy Audio Systems components remain true to Trilogy's original core values.

Engineered from the inside out with real heart and soul behind them, they will provide lasting satisfaction, making music for your pleasure.

Trilogy understands the vices and virtues of both valve and solid state without prejudice.

Through intelligent design, the appropriate technologies are applied with one goal - outstanding musicality.

Each Trilogy product has the same winning formula - an uncompromising approach to true excellence.



It is easy to overlook what mature technologies can still offer amidst all the clamour of the digital revolution.

Vinyl's appeal as a medium of the highest quality still rightfully endures, despite today's convenience-led music market.



4

The Trilogy 907 twin chassis Phono Stage has been meticulously designed to be the perfect interface between your turntable and high resolution amplifier.

from a solid billet

The compact enclosure for the active circuitry is machined from a beautiful solid billet of 'natural bead blasted' anodised aluminium. Its 1.5kg mass provides outstanding physical and electrical isolation for each of the circuit elements. Even the DC from the power supply runs through its own channel within the housing, until L-C filtering takes place before the main power regulators.



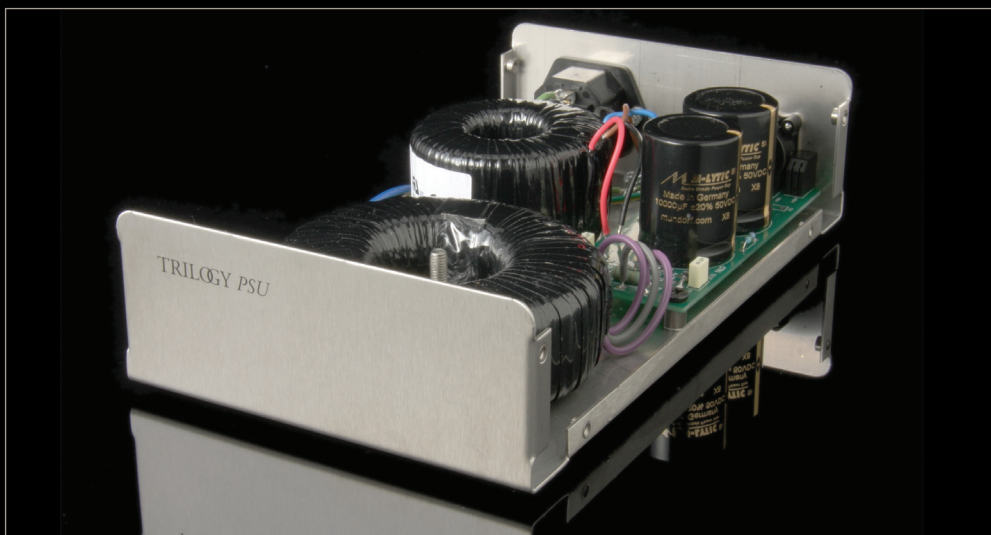
shunt regulation & class A

The commonly used series regulators, usually chosen for their lower power dissipation and simplicity, have been rejected in favour of discrete shunt regulators. These are biased heavily into Class A with plenty of voltage headroom to provide ample current for the active gain stages.

The key feature of shunt regulators are not only their ability to source current but to absorb current. This gives a clear performance advantage under the dynamic operating conditions that music demands.

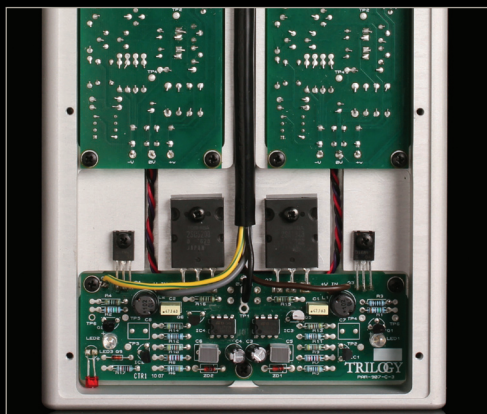
separate choke input power supply

The DC for the regulators is derived from a separate power supply housed in a brushed stainless steel enclosure. This can be placed remotely to keep any magnetic fields well away from the sensitive active circuitry. The custom mains transformer is designed with a low operating current density and a copper faraday screen. It feeds the main Mundorf reservoir capacitors through a bespoke inductor, forming a true choke input supply for absolute minimum electrical noise.



independently housed channels

Each channel has its independently housed and isolated gain stage. The fully discrete topology is single ended; achieving high bandwidth and low distortion through the use of active current sources and cascode gain blocks. Precision matched input transistor pairs ensure low noise.



no global feedback

The circuit performance is such that global feedback is not required. RIAA equalisation is completely passive and carefully optimised with precision selected components.

6

optimum matching

The rear carries switches for MM or MC cartridges and cartridge loading. Optimum matching is easily achieved through 12 combinations of resistance and 4 of capacitance.



a thousand words

A picture can say a thousand words, but no image can show you just how high the quality achieved on every trilogY product is. The finish really is strikingly beautiful, sumptuous, deep and if looked after with care, will last a lifetime.

Keeping the magical essence of analog

essential

Superbly crafted for making music at the highest level, the TrilogY 907 Phono Stage conjures up music that lives and breathes, keeping the magical essence of analog perfectly intact... as it should be.

For those who want the most from their turntable and cherished vinyl collection, the 907 is an essential purchase.

907



907



900



900



907 phono stage

Construction

- Single solid Aluminium billet construction for mechanical integrity and thermal stability, with over 1.5Kg of remaining mass.
- Separate milled compartments for all three circuit boards.
- 1.5mm thick stainless steel base.

The regulators

- Further on board inductor-capacitor filtration of external DC supply.
- Two pure class A shunt regulators are fed from constant current sources.
- Massive 15A transistors are used in the power supply shunt regulators and are mounted directly to chassis to reduce signal induced microphony.
- High voltage headroom for superior regulator operation.

The gain modules

- Zero feedback design.
- Passive RIAA equalisation with precision polystyrene capacitors.
- Two identical mono gain cards.
- Highly biased, single ended discrete circuitry throughout the gain stages.
- Tightly constructed gain stages.
- Gain stages employ cascoding and constant current sinks to insure very high linearity and low distortion.
- High overload margins on all gain settings.
- Ultra low noises precision matched input devices.
- Externally switchable gain settings for Moving Magnet, high and low output Moving Coil cartridges.
- Externally switchable cartridge loading for resistance and capacitance.
- Very low temperature co efficient precision metal film resistors used in critical locations.
- DC servo employed for very low output offset voltage.

The standard finish of the 907 is an exquisitely beautiful 'natural bead blasted anodised aluminium'. Also available is a 'black bead blasted' finish at additional cost.

900 series supply

- Choke input power supply circuitry.
- Non magnetic stainless steel construction.
- Ultra low flux bespoke toroidal mains transformer with copper Faraday screen.
- Mundorf power supply capacitors.
- Neutrik XLR connectors.

TRILOGY 907

TRILOGY

DESIGNED AND
MANUFACTURED IN
ENGLAND
www.trilogyaudio.com

 symmetry

UK DISTRIBUTOR
+44 (0)1727 865488
info@symmetry-systems.co.uk
www.symmetry-systems.co.uk